

STRETCH™ Benching System



GATEWAY
office furniture

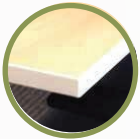
Updated 4.25

(800) 815-1224
gatewayofficefurniture.com

Sleek, flexible, durable, and sustainable.

Stretch is designed and built to be reconfigured & Eco-Remanufactured.

Open office, private office, conference, and training... ALL IN ONE SYSTEM!



Stretch work surfaces are complete with threaded metal inserts. Available in both TFP and 20 HPL Laminates.



Stretch cable trays make cable management a snap.



Aluminum, clear & frosted acrylic, or fabric privacy screens & modesty panels



With 3 simple pieces (2 legs + 1 Stretch Bar), Stretch benching can be expanded to accommodate tops up to 8ft.



- 4 x 9 & 4 x 16 surface grommets
- 2 & 3 outlet clip-on power modules
- Power, CAT 6 & USB ports



- Modular power
- Available in 3 or 4 circuits
- Ceiling or base infeed



gatewayofficefurniture.com | (800) 815-1224

List prices are suggested prices, and are subject to change without notice. Colors shown are representation only.

STRETCH™ Collaborative Benching



gatewayofficefurniture.com | (800) 815-1224

List prices are suggested prices, and are subject to change without notice. Colors shown are representation only.

Typicals

Benching Configurations

5 Day Shipping - White 1" TFL

Run of Three List: \$10,270

- 60" x 30" TFL Worksurface
- B/F Mobile Pedestal
- 14" x 60" Aluminum Spine Screen
- Under Worksurface Power (3 circuit, 5 wire)
- 16" Non-Powered Grommet



Pod of Six List: \$15,862

- 60" x 30" TFL work surface
- B/F Mobile pedestal
- 14" x 60" Aluminum Spine Screen
- Under Worksurface Power (3 circuit, 5 wire)
- 16" Non-Powered Grommet

Pod of Six with Returns List: \$28,772

- 72" x 30" Main TFL Worksurface
- 42" x 24" Return TFL Worksurface
- B/F Mobile Pedestal
- 14" x 72" Aluminum Spine Screen
- 14" x 72" Frosted Acrylic Wing Screen
- Under Worksurface Power (3 circuit, 5 wire)
- 16" Non-Powered Grommet



gatewayofficefurniture.com | (800) 815-1224

List prices are suggested prices, and are subject to change without notice. Colors shown are representation only.

STRETCH™ Private Office



gatewayofficefurniture.com | (800) 815-1224

List prices are suggested prices, and are subject to change without notice. Colors shown are representation only.

Typicals

STRETCH™ Private Office

Private Office Groupings

5 Day Shipping – White 1" TFL



L-Shape List: \$4,741

- 72" x 30" Main TFL Worksurface
- 42" x 24" Return
- BBF/FF Pedestals
- 72" Aluminum Screen
- 66" Frosted Plexi-Glass Modesty
- 16" Non-Powered Grommet

U-Shape List: \$4,858

- 72" x 30" Main TFL Worksurface
- 42" x 24" Return TFL Worksurface
- 72" x 24" Back TFL Worksurface
- BBF/FF Pedestals
- 72" Aluminum Screen
- 66" Frosted Plexi-Glass Modesty
- 16" Non-Powered Grommet



Customize and configure Stretch to your office's needs.
Available in various sizes, finishes, and more.

gatewayofficefurniture.com | (800) 815-1224

List prices are suggested prices, and are subject to change without notice. Colors shown are representation only.



Typicals

Conference Tables

5 Day Shipping - White 1" TFL



Common Sizes

Powered

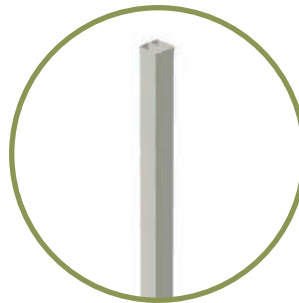
Non-Powered

- | | | |
|-----------------------|---------|---------|
| • 8' x 4' | \$5,660 | \$4,240 |
| • 10' x 4' (2 Pieces) | \$7,045 | \$4,595 |
| • 12' x 4' (2 Pieces) | \$7,675 | \$5,180 |

We have custom sizes available!
Ask us about it today!

Features:

- Modular power with base feed
- Floor Box for cable management
- Powered Tables include Power, Data and USB Ports



Power Pole

Manages cabling and connections for power, communications and A/V from building's floor to the ceiling.



Cable Floor Box

Manages cabling and connections for power, communications and A/V from building's floor to the work surface.



gatewayofficefurniture.com | (800) 815-1224

List prices are suggested prices, and are subject to change without notice. Colors shown are representation only.

Single Sit-Stand Height Adjustable Desks



GATEWAY
office furniture

(800) 815-1224
gatewayofficefurniture.com

Single Sit/Stand Height Adjustable Desks



Features

- Height Adjustable Range From 27" - 48"
- Leg Width Options From 44.5" - 78"
- Dual Motor - 250 lbs Weight Capacity
- Simple, User-Friendly Controls
- BIFMA Approved

Add-Ons

- Aluminum Screens
- Fabric Screens
- Frosted Plexi Screens
- Frosted Plexi Modesty Screens
- Desktop Power
- Wire Management Snake
- Powered Grommet
- Single and Dual Monitor Arms
- Power Beam To Carry Electrical & Data



Laminate tops sold separately. Available in multiple sizes and color options.

Products	Dimensions	Weight	SKU	List Price
Sit Stand, Dual Motor, USBA & USBC DG	44.5"-78"W x 37-44.5H x 27"D	60 bs	5CSSDBEDG	\$1,741*
Sit Stand 24" foot, DG	44.5"-78"W x 37-44.5H x 24"D	6 lbs	5CSS24FDG	\$255
Power Beam for Dbl Sit Stand 48"	48"W x 15"H x 11"D	18 lbs	5CSDDSST48SV	\$551
Power Beam for Dbl Sit Stand 54"	54"W x 15"H x 11"D	20 lbs	5CSDDSST54SV	\$592
Power Beam for Dbl Sit Stand 60"	60"W x 15"H x 11"D	22 lbs	5CSDDSST60SV	\$634
Power Beam for Dbl Sit Stand 72"	72"W x 15"H x 11"D	24 lbs	5CSDDSST72SV	\$690
Power Beam Leg End	15"W x 11 ¹ / ₄ "H x 2 ¹ / ₄ "D	6 bs	5CSDBLCSV	\$205
Power Beam Leg Center	15"W x 11 ¹ / ₄ "H x 7 ¹ / ₄ "D	9 lbs	5CSDBLESV	\$165
Thermally-Fused Laminate (TFL) Surfaces	Dimensions		SKU	List Price
24" x60" Worksurface TFL w/ 2" Grommet, White	24" x60" x1"		5QWMU2460G2	\$385
24" x72" Worksurface TFL w/ 2" Grommet, White	24" x72" x1"		5QWMU2472G2	\$425
30" x60" Worksurface TFL w/ 2" Grommet, White	30" x60" x1"		5QWMU3060G2	\$480
30" x72" Worksurface TFL w/ 2" Grommet, White	30" x72" x1"		5QWMU3072G2	\$535

*Modular power components are specified separately.

REVISED 3.25

gatewayofficefurniture.com | (800) 815-1224

List prices are suggested prices, and are subject to change without notice. Colors shown are representation only.

Double Sit/Stand Height Adjustable Desks



GATEWAY
office furniture

(800) 815-1224
gatewayofficefurniture.com

Double Sit/Stand Height Adjustable Desks



- ① Numerous Grommet Options
- ② Soft Stop/Start Adjustable Memory Presets
- ③ Optional End Panels
- ④ Optional Screens
- ⑤ Cable Tray
- ⑥ Wire Management Snake

Features

- Height Adjustable from 27" – 45"
- Base Width Adjustable from 48" – 72"
- 200 lbs Weight Capacity per side
- Single Motors: 24V, 40W
- Input Voltage: 100–240V
- Speed: 7/8" Per Second
- Surface Width from 48" – 84"
- Surface Depth from 22" – 32"
- Available in Designer Grey
- Bases & Power Beams carry data and electrical power
- BIFMA Approved

*Laminate tops sold separately. Available in multiple sizes and color options.

Products	Dimensions	Weight	SKU	List Price
Sit & Stand Base; Double, Electric	48"W x 27–45"H x 47 ¹ / ₄ "D	130 lbs	5CSDDSSBESV	\$3,531*
Power Beam for Dbl Sit Stand 48"	48"W x 15"H x 11"D	18 lbs	5CSDDSST48SV	\$551
Power Beam for Dbl Sit Stand 54"	54"W x 15"H x 11"D	20 lbs	5CSDDSST54SV	\$592
Power Beam for Dbl Sit Stand 60"	60"W x 15"H x 11"D	22 lbs	5CSDDSST60SV	\$634
Power Beam for Dbl Sit Stand 72"	72"W x 15"H x 11"D	24 lbs	5CSDDSST72SV	\$690
Double Sit Stand Screen 30"x48"	48"W x 30"H x 1 ¹ / ₄ "D	50 lbs	5CSDDSSS3048SV	\$1,652
Double Sit Stand Screen 30"x60"	60"W x 30"H x 1 ¹ / ₄ "D	55 lbs	5CSDDSSS3060SV	\$1,770
Double Sit Stand Screen 30"x72"	72"W x 30"H x 1 ¹ / ₄ "D	60 lbs	5CSDDSSS3072SV	\$1,888
Double Sit Stand Connector		21 lbs	5CSDDSSCT6OSV	\$366

gatewayofficefurniture.com | (800) 815-1224

REVISED 3.25

List prices are suggested prices, and are subject to change without notice. Colors shown are representation only.

Flip Top Tables Training Tables



Multiple Configurations Possible



GATEWAY
office furniture

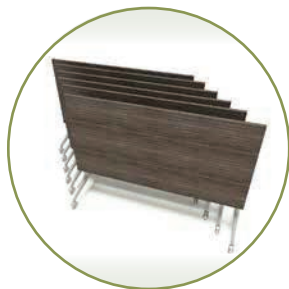
(800) 815-1224
gatewayofficefurniture.com



Flip Top Tables Training Tables



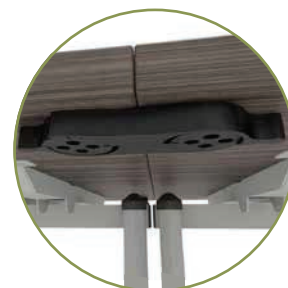
Locking Casters



Nesting Abilities



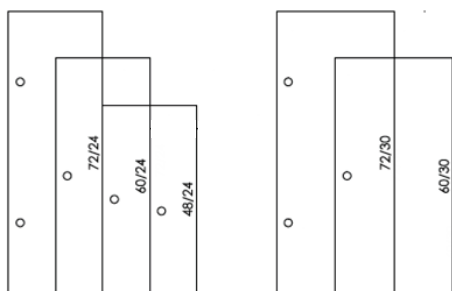
Flip Down For Storage



Ganging Brackets Allow Tables Lock Together Seamlessly

Products	Dimensions	Weight	SKU	List Price
Table Flip Top Training Base	48-72"W x 28 1/2"H x 22-30"D	30 lbs	5CSD-TT60T7224-SV	\$768*
Bracket Table Ganging			5CSD-GBI-BK	\$26

*Laminate tops sold separately. Available in multiple sizes and color options.



Tops Only

Dimensions	SKU	List
White Thermally-Fused Laminate (TFL) with 2" Grommet - 5 Day Quick Ship!		
24" x 48" x 1"	5QWMU2448G2	\$294
24" x 60" x 1"	5QWMU2460G2	\$385
24" x 72" x 1"	5QWMU2472G2	\$421
30" x 60" x 1"	5QWMU3060G2	\$476
30" x 72" x 1"	5QWMU3072G2	\$533
Preferred Pallet Surfaces (HPL)		
24" x 48" x 1 1/8"	WLU2448G2	\$388
24" x 60" x 1 1/8"	WLU2460G2	\$579
24" x 72" x 1 1/8"	WLU2472G2	\$599
30" x 60" x 1 1/8"	WLU3060G2	\$579
30" x 72" x 1 1/8"	WLU3072G2	\$691

Paint Finish



Designer Grey
D381-60

Preferred Pallet Laminates



Skyline Walnut 7964K-12 Sterling Ash 7995-38 North Sea D90-60 Fashion Grey D381-60 Grey Mesh 4877-38 White Tigris 4783-60 Wild Cherry 7054-60 Tuscan Walnut 7921-38 Harvest Maple 7953-38 Kensington Maple 10776-60 Antique White 1572-60 Designer White D354-60

gatewayofficefurniture.com | (800) 815-1224

List prices are suggested prices, and are subject to change without notice. Colors shown are representation only.